

TECHNICAL DATA SHEET

Sucralose

USP37/FCCVI/E955

Chemical Properties

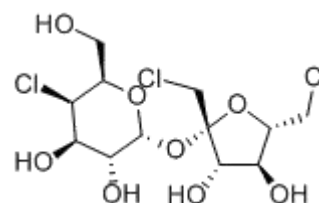
Synonym: 1,6-Dichloro-1,6-dideoxy-beta-D-fructofuranosyl;

4-chloro-4-deoxy-alpha-D-galactose

CAS NO: 56038-13-2

Molecular Formula: C₁₂H₁₉Cl₃O₈

Formula weight: 397.64



Description

Sucralose is extremely soluble in water, ethanol and methanol, and is the only functional sweeteners that use sucrose as raw material in the production currently. Sucralose is 600 times sweeter than sugar and it is easily soluble in water.

Solubility

It is soluble in water.

Specification

Item	Specification	Test Method
Appearance	White crystal powder	Visual
Identification	<p>A: The infrared absorption spectrum of a potassium bromide dispersion of the sample exhibits relative maxima at the same wavelengths as those of a similar preparation of Sucralose standard for analytical use.</p> <p>B: The retention time of the major peak(excluding the solvent peak)in the liquid chromatogram of the sample solution is the same as that of the standard solution obtained the assay.</p> <p>C: The R_f value of the major spot in the thin-layer chromatogram of the test preparation is the same as that of the standard preparation obtained in the test for related substances.</p>	USP37/FCCVI/E955
Assay (calculated with reference to the dried substance)	98.0%-102.0%	USP37/FCCVI/E955
Particle size	Min 90% through 100 mesh	In-house
Specific rotation	+84.0° - +87.5°	USP37/FCCVI/E955
Water Content KF	Max 2.0%	USP37/FCCVI/E955
pH	5-7	USP37/FCCVI/E955

Methanol	Max 0.1%	USP37/FCCVI/E955
Ignited residue	Max 0.7%	USP37/FCCVI/E955
Heavy metals(Pb)	Max 10ppm	USP37/FCCVI/E955
Lead	Max 1.0ppm	USP37/FCCVI/E955
Arsenic	Max 3.0ppm	USP37/FCCVI/E955
Hydrolysis products TLC	Max 0.1%	USP37/FCCVI/E955
Triphenylphosphine oxide	Max 0.0001%	USP37/FCCVI/E955
Related substances TLC	Meets the requirements	USP37/FCCVI/E955
Total Plate Count	Max 250cfu/g	USP37
Yeasts & Molds	Max 50cfu/g	USP37
Coliforms	Max 3cfu/g	USP37
<i>E. Coli</i>	Max 10cfu/g	USP37
<i>Staphylococcus</i>	Max 10cfu/g	USP37
<i>Salmonella</i>	Negative/25g	USP37

Ingredients

Sucralose 98.0%~102.0%

Labeling

In the United States and the European Union: Sucralose

Applications

Sucralose is approved for use in beverages, pickles class, compound condiment, wine, ice cream, cakes, biscuits, bread and many other areas in China.

Safety

This product is safe for the intended use. Avoid ingestion, inhalation of dust or direct contact by applying suitable protective measures and personal hygiene. See Material Safety Data Sheet for full safety information.

Handling recommendations

This product is safe for the intended use. Avoid ingestion, inhalation of dust or direct contact by applying suitable protective measures and personal hygiene. See Material Safety Data Sheet for full safety information. During transportation, it should prevent violent vibration, and keep moisture-proof, waterproof and sunlight-proof. It should be stored in a well-closed container away from moisture and direct sunlight.

Packaging, Storage & Shelf Life

Package	25kg/drum; or according to customers' requirements.
Storage	Store in a cool and dry place and kept in the sealed container, avoiding strong and direct light and moisture.
Shelf life	2 years if sealed and stored properly.