

## TECHNICAL DATA SHEET

# L-Proline

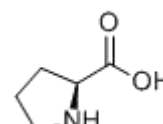
## AJI97

### Chemical Properties

Molecular Formula: C<sub>5</sub>H<sub>9</sub>NO<sub>2</sub>

Molecular Weight: 115.13

CAS Number: 147-85-3



### Description

L-Proline is a non-essential amino acid that is synthesized from GLUTAMIC ACID. It is an essential component of COLLAGEN and is important for proper functioning of joints and tendons.

### Solubility

It is soluble in water.

### Specification

Item	Specification	Test Method
Appearance	White crystals or crystalline powder	Visual
Identification		
Infrared Absorption	Meets the requirements	AJI97
Assay	98.5%~101.0%	AJI97
pH	5.9~6.9	AJI97
Specific rotation [ $\alpha$ ] <sub>D</sub> <sup>20</sup>	-84.5°~-86.0°	AJI97
Loss on drying	Max 0.3%	AJI97
Residue on ignition	Max 0.1%	AJI97
Other amino acids	Max 0.5%	AJI97
State of solution	Min 98%	AJI97
Ammonium	Max 0.02%	AJI97
Sulfate	Max 0.02%	AJI97
Chloride	Max 0.02%	AJI97
Heavy metals (Pb)	Max 10ppm	AJI97
Iron	Max 10ppm	AJI97
Arsenic	Max 1ppm	AJI97
Total Plate Count	Max 1,000cfu/g	AJI97
Mold & Yeast	Max 100cfu/g	AJI97

<i>E. Coli</i>	Negative	AJI97
<i>Salmonella</i>	Negative	AJI97

## Ingredients

---

Pure L-Proline.

## Applications

---

L-Proline is used as pharmaceutical raw material or for food supplement.

## Safety

---

This product is safe for the intended use. Avoid ingestion, inhalation of dust or direct contact by applying suitable protective measures and personal hygiene. See Material Safety Data Sheet for full safety information.

## Handling recommendations

---

Minimize dust generation and accumulation. Avoid breathing dust, vapor, mist, or gas. Avoid contact with eyes, skin, and clothing. Keep container tightly closed. Avoid ingestion and inhalation. Use with adequate ventilation. Wash clothing before reuse.

## Packaging, Storage & Shelf Life

---

Package	25kg/drum; or according to customers' requirements.
Storage	Store in a well-closed container away from moisture and direct sunlight.
Shelf life	2 years if sealed and stored properly.