

TECHNICAL DATA SHEET

Oatcan™ Oat Beta-D Glucan

80%

Chemical Properties

Plant source: *Avena sativa* Linn

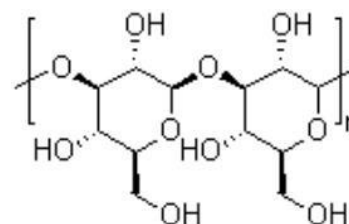
Synonym: Oat Beta 1,3-1,4-glucan; 1,3- Beta- glucans from oat;

Oat Beta-(1,3)(1,4)-D-Glucan.

CAS No: 55965-23-6

Chemical Formula: $[C_{18}H_{30}O_{14}]_n$

Molecular Weight: $(470.42)_n$



Description

Oat Beta-Glucan is a soluble fiber derived from the oat's (*Avena sativa*) endosperm cell walls. It is a natural polymer comprised of individual glucose molecules that are linked together by a series of Beta-(1 3) and Beta-(1 4) linkages.

Solubility

It's soluble in hot water.

Specification

Item	Specification	Test Method
Appearance	Light yellow or off-white free powder	Visual
Odor	Odorless	Smelling
Beta Glucan	Min 80.0%	AOAC 995.18
Particle size	98% through 80 mesh	Sieve
Moisture	Max 5.0%	FCCV
Ash	Max 5.0%	FCCV
Protein	Max 5.0%	FCCV
Heavy metals	Max 10 ppm	GB/T 5009.12
Arsenic	Max 2 ppm	GB/T 5009.12
Lead	Max 3 ppm	GB/T 5009.12
Cadmium	Max 1 ppm	GB/T 5009.12
Mercury	Max 0.1ppm	GB/T 5009.12
Pesticides Residues	Max 1.0ppm	In-house
Total plate count	Max 1,000 cfu/g	GB/T 4789
Total yeast & mold	Max 100 cfu/g	GB/T 4789
Coliforms	Max 30 MPN/100g	GB/T 4789
<i>E. Coli</i>	Negative/g	GB/T 4789

<i>Salmonella</i>	Negative/g	GB/T 4789
<i>Staphylococcus aureus</i>	Negative/10g	GB/T 4789

Ingredients

Beta-1,3/1,4-D Glucan Min 80%

Labeling

In the United States and the European Union: Oatcan™ Oat β-D Glucan 80%

Applications

1. Oat beta-glucan is beneficial to high cardiovascular disease risk populations.
2. Oat beta-glucan's anti-wrinkle promise.
3. It lowers the risk of coronary heart disease by significantly lowering LDL cholesterol.
4. Stimulating immune cell function.

Safety

This product is safe for the intended use. Avoid ingestion, inhalation of dust or direct contact by applying suitable protective measures and personal hygiene. See Material Safety Data Sheet for full safety information.

Handling recommendations

Keep away from heat. Keep away from sources of ignition. Ground all equipment containing material. Do not ingest. Do not breathe dust. If ingested, seek medical advice immediately and show the container or the label. Keep away from incompatible substances such as oxidizing agents, acids, alkalis.

Packaging, Storage & Shelf Life

Package	25kg/drum, pack in paper-drums and two plastic-bags inside; or according to customers requirements.
Storage	In cool & dry place. Keep away from strong light and heat.
Shelf Life	2 years if sealed and stored properly.