

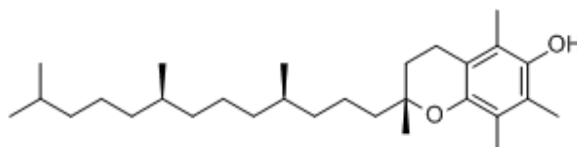
SPECIFICATION SHEET

Tocobest™ D-alpha-Tocopherol Oil 1300IU

CAS: 59-02-9

Chemical Formula: C₂₉H₅₀O₂

Molecular Weight: 430.71



GENERAL CHARACTERISTICS

Description	D-alpha-tocopherol, the most active form of VE, is originated from soybean oil. It is insoluble in water, but soluble in ethanol, gasoline, ethyl and vegetable oil, heat-stable(almost no decomposition if heated to 200°C), nearly odorless. It darkens slowly in air and on exposure to light.
Appearance	Viscous oily liquid.
Color	Yellow to brownish red.

ANALYTICAL CHARACTERISTICS

Identification	A: Infrared absorption spectrophotometry obtained by the substance to be examined conforms to that obtained by the reference. B: Specific Optical Rotation: +0.05° to +0.1°
Acidity Value	Max 2mgKOH/g
D-alpha-Tocopherol	Min 87.25% Min 1300IU
Residual solvents	
Hexane	Max 290ppm
Toluene	Max 890ppm
Heavy Metals	Max 10ppm

MICROBIAL CHARACTERISTICS

Total plate count	Max 1000cfu/g
Total yeast & mold	Max 100cfu/g
<i>E.coli</i>	Negative
<i>Salmonella</i>	Negative



INGREDIENTS

NLT 87.25% D-alpha-tocopherol, with NMT 12.75% refined soy oil as carrier.

LABELING

In the United States and the European Union: Tocobest™ Vitamin E Oil
D-alpha Tocopherol 1300IU

USES RECOMMENDATIONS

The properties of VE like Antioxidant activity, Bio-membrane stabilizing activity, Promotion of blood circulation, Maintaining hormone balance and Anti-thrombosis activity give the main functions of VE. D-alpha-tocopherol products are used for fortification of margarine, oil, fat, nutrition products and infant food, or in supplements and as an antioxidant in oil and fat, also used in cosmetic products.

HANDING RECOMMENDATIONS

Keep container tightly closed and away from strong light. Keep container in a cool, well-ventilated area. Keep away from heat. Keep away from sources of ignition. Empty containers pose a fire risk, evaporate the residue under a fume hood. Ground all equipment containing material. Do not ingest. Do not breathe gas/fumes/vapor/spray. If ingested, seek medical advice immediately and show the container or the label. Keep away from incompatibles such as oxidizing agents.

PACKING & SHELF LIFE

Package 20kg/steel drum, 50kg/steel drum or 190kg/steel drum.
Shelf life 2 years if sealed and stored properly.